



TO LET / FOR SALE

UNIT B

1,451m² / 15,615sqft

49 CAR PARK SPACES

BANKHEAD DRIVE | CITY SOUTH BUSINESS PARK | PORTLETHEN AB12 4XX

The Place to do
BUSINESS





LOCATION

City South is a prime location to the South of Aberdeen, around 5 miles from the City Centre. City South benefits from excellent road connectivity and prominence and can be directly accessed via the A92

- A range of high quality pavilions ready for occupation
- Suitable for Office, Retail, Nursery or Gym use
- 2 minute walk to Euro Garages (coming soon) including convenience retail, KFC and coffee shop.

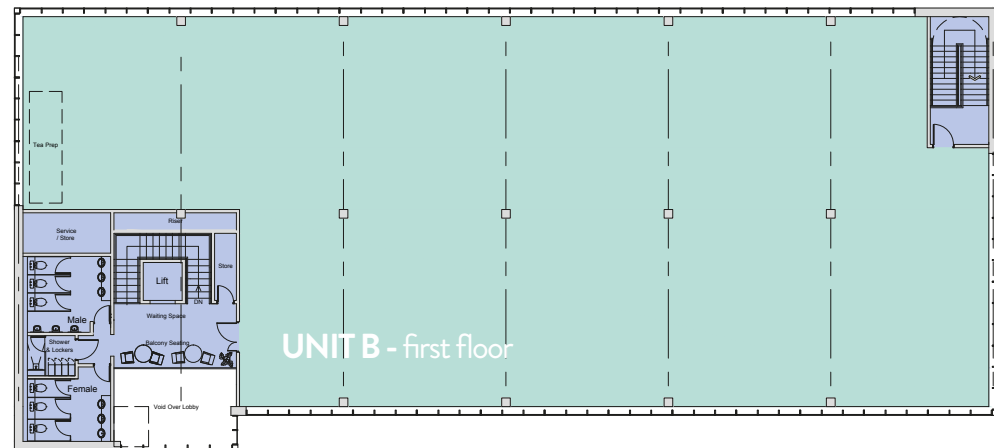
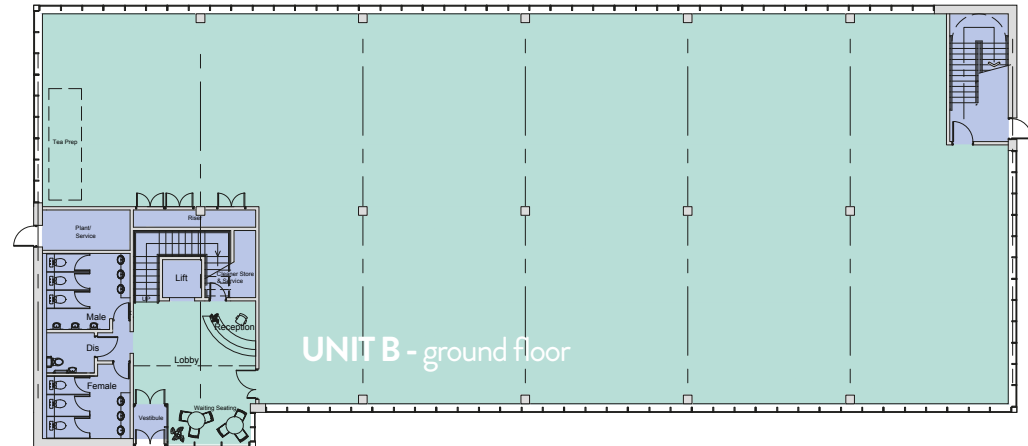
ACCOMMODATION

Unit B is a detached office pavilion prominently located at the entrance to City South, adjacent to the new KCA Deutag HQ.

The building is available to let as a whole or on a floor by floor basis.

FLOOR	AREA (Sq. M.)	AREA (Sq. Ft.)	CAR PARKING
Ground	743	7,998	25
First	708	7,617	24
TOTAL	1,451	15,615	49

FLOORPLANS



GROUND FLOOR

Gross
823m² / 8,860sqft

Net
743m² / 7,998sqft

FIRST FLOOR

Gross
805m² / 8,661sqft

Net
708m² / 7,617sqft



SPECIFICATION

All pavilions at City South are designed to the highest quality with a focus on sustainability, efficiency and occupier comfort. The layout and specification of the pavilions can be tailored to suit the end user, whether this be office, gym, nursery or retail.

Office finishes include:

- High quality external design
- Feature Double Height Entrance
- High speed passenger lift
- Flexible VRF comfort cooling system
- Raised Access Floors
- Luxury Finishes to WC's and Shower
- Superfast Broadband connection available
- EPC 'B'

TERMS

Unit B is available to lease or purchase;

Rental: £15 per sq.ft. with attractive incentive package

Purchase Price on application

VAT

All prices and rents quoted are exclusive of VAT.

VIEWING & OFFERS

Please contact the joint agents to discuss your interest further or to arrange a viewing at City South.





**RICHARD
IRVIN FM**

acumen
ACCOUNTANTS & ADVISORS

BUILDING	SQ.FT.	SQ.M.	PARKING
A2	3,876	360	14
B	15,615	1,451	49
C	5,488	510	20

CBRE

Iain Landsman
email: iain.landsman@cbre.com
tel: 01224 219 000

Amy Tyler
email: amy.tyler@cbre.com
tel: 01224 219 000

FG Burnett

Jonathan Nesbitt
email: jonathan.nesbitt@fgburnett.co.uk
tel: 01224 572 661

Graeme Nisbet
email: graeme.nisbet@fgburnett.co.uk
tel: 01224 572 661

a development by
dandara

Disclaimer: The information and images contained in this document are intended to convey the concept and vision for the City South, Aberdeen development. They are for guidance only, may alter as work progresses and do not necessarily represent a true and accurate depiction of the finished project. This document does not form part of any contract, nor does it form any representation or warranty in relation to the Developer, its Employees, Agents or to the City South, Aberdeen development or any of its related developments.

MAY2021